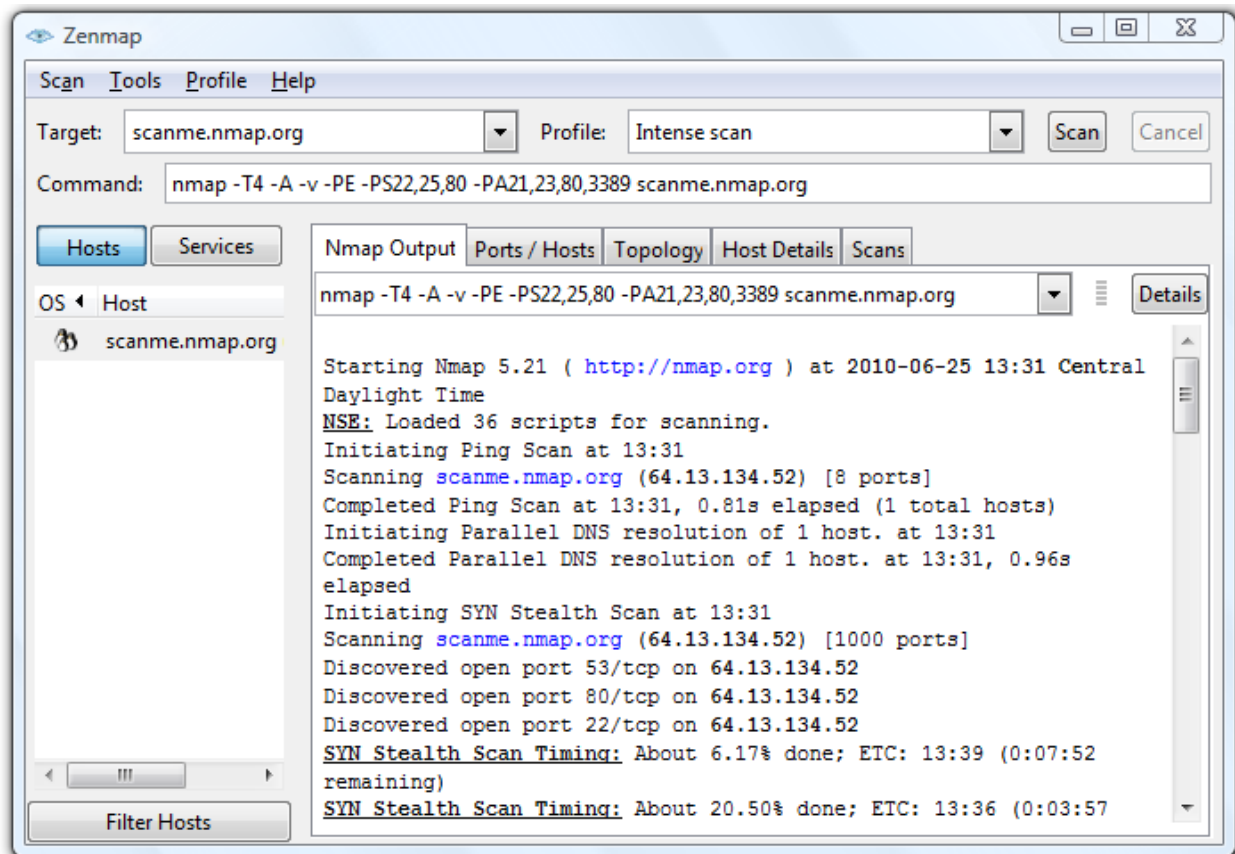


This handout is a printout of an actual Zenmap report. It is used with the course project.

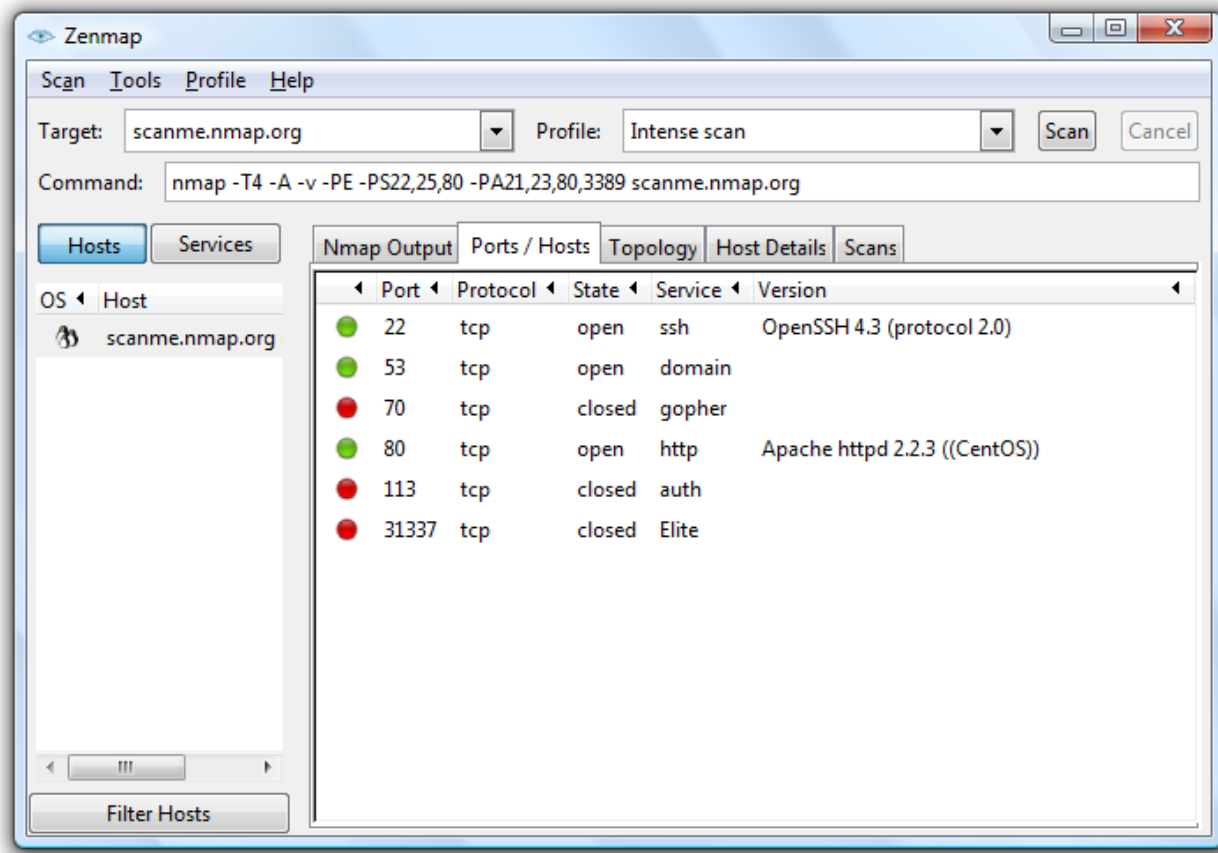
Source: Nmap Report

Zenmap: Nmap Output Tab



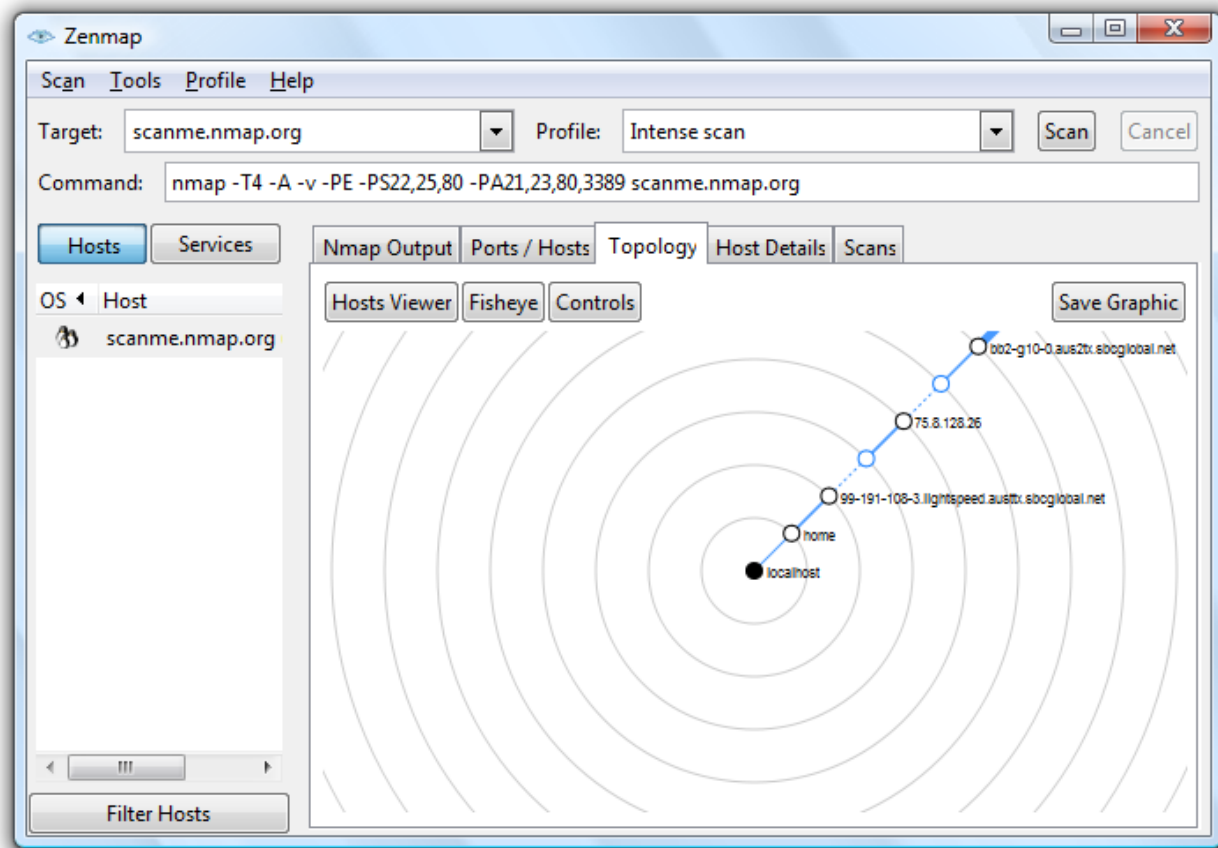
The Nmap Output tab displays Nmap terminal output, which includes open and closed ports.

Zenmap Ports / Hosts Tab



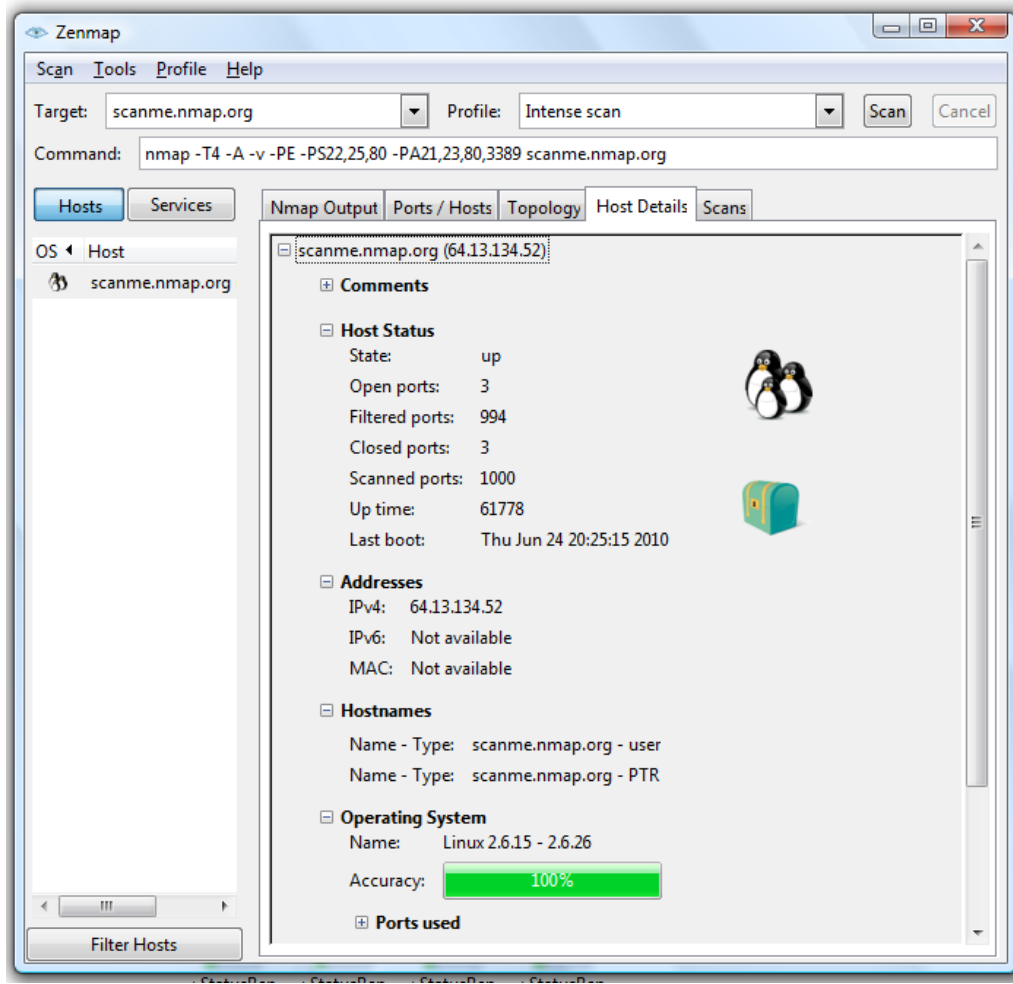
The Ports/Hosts tab displays either interesting ports on the selected host as shown or all the hosts which have a specific port open or filtered.

Zenmap Topology Tab



The Topology tab displays connections between hosts in a network; each ring represents a network hop from the center node.

Zenmap Host Details Tab



The Host Details tab displays details about the selected host, such as numbers of open and closed ports, Internet protocol (IP) address.