

# ***Medical Terminology: An Illustrated Guide, Ninth Edition (Cohen)***

## **Worksheet**

### **Chapter 4—Integumentary System**

#### **True or False**

Examine the following statements. If the statement is true, write “True.” If the statement is false, write “False.”

1. The dermis is the outermost portion of the skin. \_\_\_\_\_
2. Sebaceous glands secrete sweat. \_\_\_\_\_
3. Cicatrization is scar formation. \_\_\_\_\_
4. Keratin is found in subcutaneous tissue. \_\_\_\_\_
5. The medical term for baldness is alopecia. \_\_\_\_\_
6. Squamous cell and basal cell carcinomas involve epithelial tissue. \_\_\_\_\_
7. Shingles is caused by a fungal infection. \_\_\_\_\_
8. Inflammation of the fingernail is called onychia. \_\_\_\_\_
9. Cutaneous tissue is found in the integumentary system. \_\_\_\_\_
10. A symptom of scleroderma is thinning of the skin. \_\_\_\_\_

#### **Fill-in-the-Blank**

Complete the sentence with the correct term(s).

11. The uppermost portion of the skin is the \_\_\_\_\_.
12. The layer of tissue beneath the skin is described as \_\_\_\_\_.
13. The oily secretion that lubricates the skin is \_\_\_\_\_.
14. The main pigment in skin is \_\_\_\_\_.

15. The protein that makes up hair and nails is \_\_\_\_\_.
16. The study of the skin and skin diseases is \_\_\_\_\_.
17. A tumor of melanocytes is called \_\_\_\_\_.
18. Alopecia is a loss of \_\_\_\_\_.
19. A fungal infection of the hair is termed \_\_\_\_\_.
20. Itchiness can be relieved by using a(n) \_\_\_\_\_ agent.
21. The medical term for a mole or birthmark is \_\_\_\_\_.
22. The medical term for a wart is \_\_\_\_\_.
23. Sweat is produced by a(n) \_\_\_\_\_ gland.
24. Skin, hair, and nails make up the \_\_\_\_\_ system.
25. The root *onych/o* means \_\_\_\_\_.
26. An agent that prevents or relieves itching is a(n) \_\_\_\_\_.
27. A gland that produces sebum is the \_\_\_\_\_.
28. The skin and its associated glands, hair, and nails make up the \_\_\_\_\_ system.
29. The layer of tissue beneath the skin is the \_\_\_\_\_ tissue.
30. \_\_\_\_\_ means producing or secreting sweat or pertaining to a sweat gland.
31. The term \_\_\_\_\_ refers to study of the skin and diseases of the skin.
32. The process of scar formation is known as \_\_\_\_\_ (hint: a scar is a cicatrix).
33. A chronic hereditary dermatitis with red lesions covered by silvery scales is known as \_\_\_\_\_.
34. Profuse sweating is called \_\_\_\_\_.
35. The skin gland that vents directly to the surface of the body is the \_\_\_\_\_.

### Matching

Match the following terms, and write the appropriate letter next to each term.

36.

**Term**

hypohidrosis \_\_\_\_\_  
keratosis \_\_\_\_\_  
trichomycosis \_\_\_\_\_  
paronychia \_\_\_\_\_

**Definition**

A. fungal infection of a hair  
B. horny growth of skin  
C. inflammation around a nail  
D. deficiency of sweat production

37.

**Term**

stratum corneum \_\_\_\_\_  
pyoderma \_\_\_\_\_  
exudate \_\_\_\_\_  
dehiscence \_\_\_\_\_

**Definition**

A. material that drains from a wound  
B. uppermost layer of the epidermis  
C. disruption of a wound  
D. presence of pus in the skin

38.

**Term**

escharotomy \_\_\_\_\_  
scleroderma \_\_\_\_\_  
psoriasis \_\_\_\_\_  
vesicle \_\_\_\_\_

**Definition**

A. hardening of the skin  
B. removal of a scab  
C. a fluid-filled blister  
D. skin disease with redness and silvery scales

39.

**Term**

urticaria \_\_\_\_\_  
macule \_\_\_\_\_  
diaphoresis \_\_\_\_\_  
seborrhea \_\_\_\_\_

**Definition**

A. excess flow of sebum  
B. hives  
C. profuse sweating  
D. a flat colored spot

### Pronounce It

For each phonetic transcription in this section, pronounce the term aloud and write it in the space provided, being careful to spell it correctly.

40. wele \_\_\_\_\_

41. es-kar-OT-o-me \_\_\_\_\_

42. e-vis-er-A-shun \_\_\_\_\_

43. KE-loyd \_\_\_\_\_

44. PEM-fih-gus \_\_\_\_\_

45. pru-RI-tus \_\_\_\_\_
46. so-RI-ah-sis \_\_\_\_\_
47. al-o-PE-she-ah \_\_\_\_\_
48. eks-AN-them \_\_\_\_\_
49. ku-TA-ne-us \_\_\_\_\_
50. KER-ah-tin \_\_\_\_\_
51. SE-bum \_\_\_\_\_
52. sik-ah-trih-ZA-shun \_\_\_\_\_
53. de-HIS-ens \_\_\_\_\_
54. EK-ze-mah \_\_\_\_\_
55. se-BA-shus \_\_\_\_\_
56. sub-ku-TA-ne-us \_\_\_\_\_
57. su-dor-IF-er-us \_\_\_\_\_
58. in-teg-u-MEN-tah-re \_\_\_\_\_

### **Word Building**

For each item in this section, select the correct word parts from the bank below to form the term that matches the definition. Word parts may be used more than once.

#### **Word Bank**

a	ichthy	onych
aden	itis	path
an	lysis	sis
brom	malacia	tome
derm	o	trich
hidr	oid	y

59. Congenital disorder of dry scaly skin \_\_\_\_\_
60. Loosening or separation of the skin \_\_\_\_\_

61. Instrument for cutting skin \_\_\_\_\_
62. Inflammation of a sweat gland \_\_\_\_\_
63. Resembling skin \_\_\_\_\_
64. Softening of a nail \_\_\_\_\_
65. Like or resembling a hair \_\_\_\_\_
66. Production of foul-smelling sweat \_\_\_\_\_
67. Any disease of the skin \_\_\_\_\_
68. Absence of sweating \_\_\_\_\_

### **Sorting**

For each word part category in this section, list the corresponding word parts from the bank below.

#### **Word Bank**

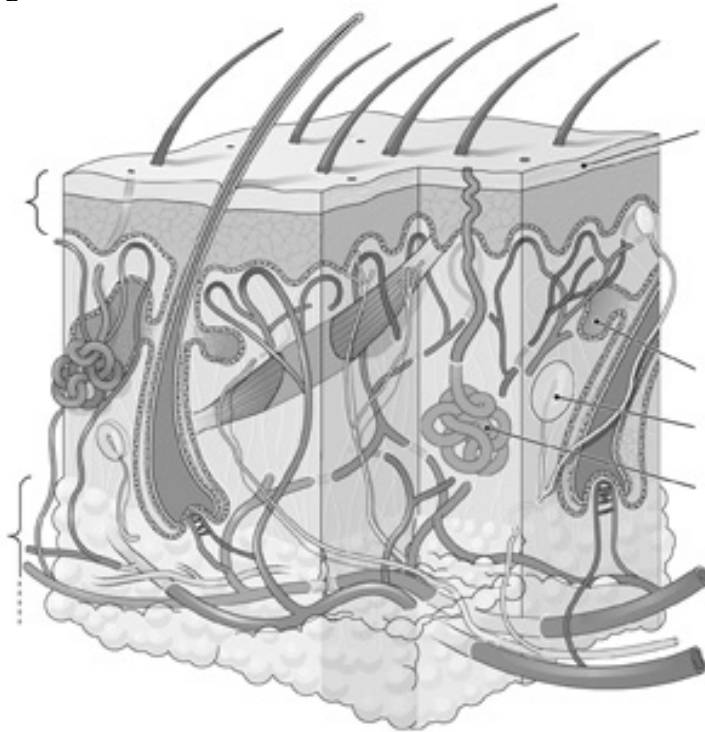
dermis	pemphigus	stratum basale
macule	psoriasis	sudoriferous gland
melanoma	scleroderma	vesicle
papule	sebaceous gland	wheal

69. parts of the skin \_\_\_\_\_
70. skin lesions \_\_\_\_\_
71. skin disorders \_\_\_\_\_

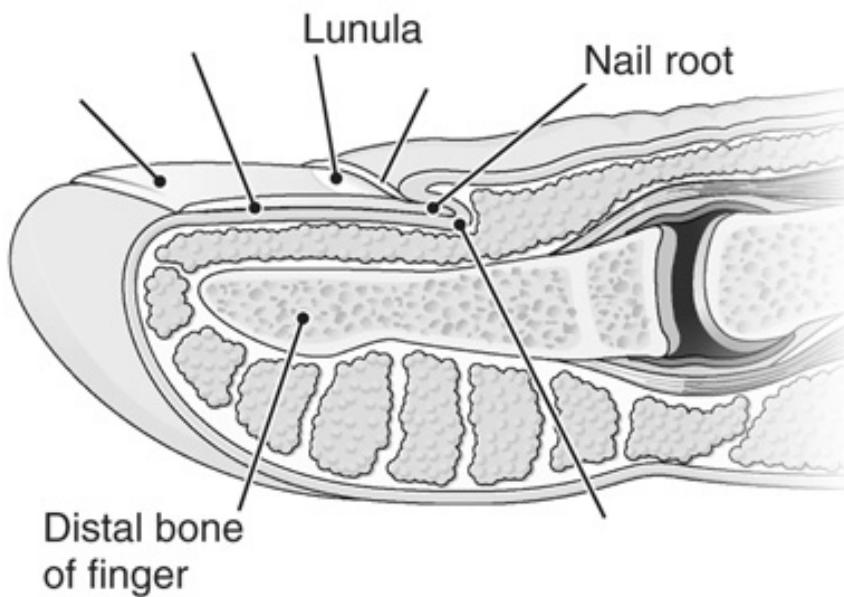
### Look and Label

For each image in this section, write each label indicated on the image in the correct location or near the image with a line pointing from the label to the correct location on the image.

72. Labels: epidermis, pressure receptor, sebaceous gland, stratum corneum, subcutaneous layer, sweat gland



73. Labels: cuticle, growth region, nail bed, nail plate



## Crossword Puzzle

Complete the crossword puzzle using the clues provided.

74.



### Across

1. Horny layer of the skin: combining form
3. Inflammation of a sweat gland: \_\_\_ \_\_\_ adenitis
6. Autoimmune disease that affects the skin: abbreviation
7. Excess growth of hair
9. Within the skin: abbreviation
11. Viral disease that affects the skin
13. Skin: combining form
14. Three: prefix
15. Scar: \_\_\_ \_\_\_ trix
17. Examination by pressing a glass plate against the skin
19. True, good, easy: prefix
20. Half: prefix starting with s
21. Part of a medical history: \_\_\_ H: abbreviation
22. Under, below, decreased: prefix

### Down

1. Raised, thickened scar
2. Pertaining to a hair
3. Measurement of packed red cells: abbreviation
4. Abnormal, painful: prefix
5. Removal of scab tissue
8. Bacterial skin infection common in children: \_\_\_\_\_ o

10. Remove dead tissue, as from a wound
12. A layer, as of the skin
16. Meaning of the root onych/o
18. A route of injection: abbreviation
19. On, over: prefix

## Case Study

Read the following case study carefully. Complete the sentence with the correct term(s).

### ***Consultation: Seborrheic Keratosis***

**HISTORY OF PRESENT ILLNESS:** The patient is a 58-year-old male who comes in complaining of a mole localized on the right side of the parietal area of his head. He has had this problem for at least 1 year. He is concerned that this skin lesion is getting bigger over the past several months. Otherwise, he is asymptomatic.

**PAST MEDICAL HISTORY:** He has chronic posterior nasal drainage that causes chronic cough, mainly at nighttime. He also has chronic nasal congestion. He denies previous history of asthma. The patient denies any previous history of skin cancer.

**PAST SURGICAL HISTORY:** The patient is status post bilateral carpal tunnel operations on both hands.

**ALLERGIES:** The patient refers that he is allergic to penicillin and allergic to Bactrim. He states that whenever he takes these medications, he has an erythematous rash as well as hives.

**SOCIAL HISTORY:** The patient does not smoke cigarettes. He drinks approximately one to two 12-ounce beers per day. He does not do any regular exercise. He works as a bird biologist.

**FAMILY HISTORY:** Unremarkable.

**REVIEW OF SYSTEMS:** Unremarkable.

**PHYSICAL EXAMINATION:** Vital signs: Temperature 97.6, heart rate 80, respiratory rate 20, blood pressure 120/70. Weight 196 pounds. General description: Middle-aged male with no respiratory distress. HEENT exam is unremarkable. Neck exam is unremarkable. Lungs clear to auscultation. Cardiovascular exam: S1, S2, regular rhythm. No S3, no S4, no murmurs.

Abdomen: Unremarkable. Extremities: No edema. Peripheral pulses are symmetric. Neurologic: The patient is alert and oriented to place, time, and person. There are no focal sensory motor deficits. Examination of the skin reveals a 0.5-cm papule localized on the right parietal area of the scalp. This lesion is round in shape with well-defined borders. Examination of the back reveals a 1-cm papule with well-defined borders localized in the left upper back with mild hyperpigmentation. There are two similar lesions surrounding the first lesion in the left upper back with similar characteristics. The patient has several hyperpigmented lesions in the upper back that are symmetric and with well-defined borders. These lesions are mainly macules, although there are some papules with well-defined borders.



ASSESSMENT AND PLAN

1. Seborrheic keratosis. The patient was reassured regarding the benign nature of these skin lesions. There is no evidence of malignancy at the moment. The patient's wife was also taught about the characteristics of seborrheic keratosis. The patient will perform a monthly skin lesion exam to rule out the possibility of skin cancer and melanoma. The patient's wife will perform the same evaluation of the skin on patient's back.
2. Health maintenance. This will be addressed by this patient's primary care physician in his home state. The patient refers that he lives here just for a few months in a year. He will soon move home again.

75. Carpal tunnel operations involve the \_\_\_\_\_.

76. "Lungs clear to auscultation" means that \_\_\_\_\_ were heard with a stethoscope.

77. S1 and S2 refer to \_\_\_\_\_.